



Social Distance Detecting Using Deep Learning for Present and Future Viral Outbreaks

Aditya Tupe¹, Saidnuman Tamboli², Tanisha Shaikh³, Awez Shaikh⁴

Computer Engineering, Al-Ameen Educational & Medical Foundation College of Engineering & Management Studies,
Pune, India¹

Computer Engineering, Al-Ameen Educational & Medical Foundation College of Engineering & Management Studies,
Pune, India²

Computer Engineering, Al-Ameen Educational & Medical Foundation College of Engineering & Management Studies,
Pune, India³

Computer Engineering, Al-Ameen Educational & Medical Foundation College of Engineering & Management Studies,
Pune, India⁴

Abstract: This report outlines a deep learning-based method for monitoring social distancing by analyzing the spacing between individuals in shared environments. The aim is to reduce the spread of infectious viruses like HMPV, and other potential future threats. The system uses video input, applying the YOLOv3 model—a pre-trained neural network—to detect pedestrians. To measure distances between people accurately, the footage is converted into a top-down, two-dimensional perspective. Individuals who don't maintain the required safe distance are flagged with red boxes and connecting lines. The model was tested with pre-recorded pedestrian footage and showed strong performance in identifying distancing violations. This approach can be effectively used in hospitals and other public settings to help control disease transmission.

Keywords: Social distancing, Deep learning, YOLOv3, Object detection, Computer vision.

I. INTRODUCTION

The World Health Organisation (WHO) globally endorsed social distancing as one of the main preventative strategies for highly infectious diseases. The same preventative action is necessary for fighting other airborne viruses, including Human Metapneumovirus (HMPV) as well as new viral threats.

The project proposes a deep learning model for automatic people detection, real-time distance measurement, and violation checking in crowded places based on normal CCTV cameras. The system detects areas of higher risk where the likelihood of transmission of diseases is greater and enables enforcement of preventive measures in hospitals, malls, schools, and public spaces.

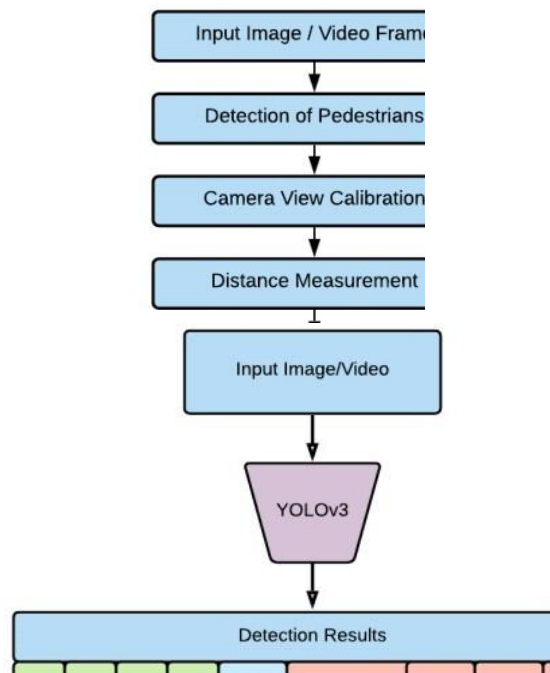
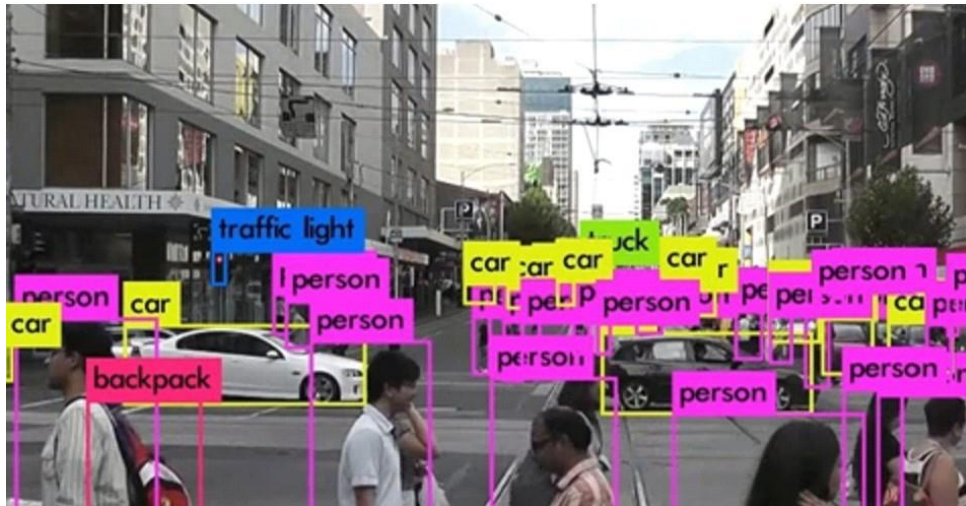
Whereas image classification classifies objects within images, object detection builds from that by furthermore identifying where those objects are located. Object detection, used on each frame within video surveillance, is object tracking.

Our model seeks to overcome the drawbacks of human monitoring and constructs an automatic surveillance system that can alert authorities for instances of violating distance norms—minimizing the need for constant human observation.

II. RELATED WORK

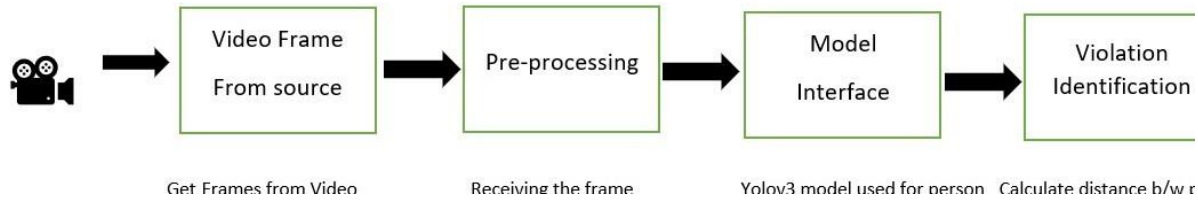
Scientists globally have sought many medical as well as pharmaceutical interventions for viral infections. Yet, interventions such as social distancing are still essential.

Deep learning, notably using Convolutional Neural Networks (CNNs), has been successful in object detection and classification tasks. A number of such advanced models, such as YOLO (You Only Look Once), provide fast speeds as well as accuracy through object localization as well as object classification. YOLO is well-placed for detecting human movement tracking across video frames given its capabilities of real-time detection.



$$\sqrt{(x^2 - x^1)^2 + (y^2 -$$





III. METHODOLOGY

The objective is detecting and tracking safe distances between people within public settings through computer vision and deep learning Pedestrian Detection

YOLOv3 as a one stage deep network model is employed for detecting pedestrians within frames of video It makes bounding boxes as well as class probabilities using regression In detection only the class person is kept while others are discarded Individuals are identified with bounding boxes drawn around them for identifying their positions Top Down View Conversion

In order to precisely measure between individuals the recorded video is transformed from a view from the perspective of one of the individuals to a view from above top down birds eye view The ground is assumed as a flat plane Four manually chosen reference landmarks are transformed from the frame to make a 2D plane Distance Measurement

The bottom center point of each bounding box is mapped onto the top down view The Euclidean distance between two individuals at locations $x_1 y_1$ and $x_2 y_2$ is given by

d equals square root of x_2 minus x_1 squared plus y_2 minus y_1 squared

The individuals are marked with red boxes with red lines between them if the measured distance is less than the specified threshold t Green boxes and lines are used otherwise for marking compliance

CONCLUSION AND FUTURE SCOPE

We introduced a deep learning framework for social distancing monitoring from an aerial view. Based on YOLOv3 and transfer learning, the framework is accurate for person detection and tracking from real-life video sequences.

We introduced a deep learning framework for social distancing monitoring from an aerial view. Based on YOLOv3 and transfer learning, the framework is accurate for person detection and tracking from real-life video sequences.

Key results include:

- 92% accurate detection without transfer learning.
- 95% accuracy with transfer learning.
- 95% accuracy for tracking.

This framework can be of critical value in stopping the transmission of highly infectious diseases within crowded public places and healthcare settings. Enhancements for the future might involve:

- Utilizing correct camera calibration for measurements of the real world.
- Accommodation of varied indoor and outdoor lighting and space environments.
- Merging other object tracking models such as DeepSORT or ByteTrack.

Implementing the system within hospitals can assist medical staff in upholding safety standards and minimizing the risk of transmission from infected patients suffering from contagious diseases such as COVID-19 or HMPV.

REFERENCES

- [1]. Tanveer Ahmad, Yinglong Ma, Muhammad Yahya, Belal Ahmad, "Object Detection by Modified YOLO Neural Network", 2020.
- [2]. Nashwan Adnan, Mehmet Salur, Mehmet Karakose, "Embedded Real-Time Object Detection and Measurement of its Size", 2018.
- [3]. J. Redmon, S. Divvala, R. Girshick, A. Farhadi, "You Only Look Once: Unified Real-Time Object Detection", 2018.
- [4]. Suresh K, Bhuvan S, Palangappa MB, "Social Distance Identification Using Optimized Faster Network", 2021.
- [5]. Marina Ivašić-Kos, Mate Krišto, Miran Pobar, "Human Detection in Thermal Imaging Using YOLO", 2019.
- [6]. D.T. Nguyen, W. Li, P.O. Ogunbona, "Human Detection from Images and Videos: A Survey", *Pattern Recognition*, vol. 51, pp. 148–175, 2016.