



AI-SMART LEARN PERSONALISED LEARNING

Dr. K. Prem Kumar¹, K.Ashritha², J.Amruth³, M.Usha Rani⁴, B.Siddhartaa⁵,
S.Karunakar Reddy⁶

Professor & HOD, Dept. of AI & ML, ACE Engineering College (Autonomous), Hyderabad, Telangana, India¹

Dept. of AI & ML, ACE Engineering College (Autonomous), Hyderabad, Telangana, India²⁻⁶

Abstract: With the rapid growth of digital education, the need for personalized learning has become increasingly important. Traditional learning systems often follow a uniform approach that does not consider individual differences in students' abilities, preferences, and learning pace. This can result in reduced engagement and ineffective learning. To address this issue, this project proposes an AI based Personalized Learning Recommendation System that delivers customized educational content based on individual student characteristics. The system aims to provide a tailored learning experience by analyzing key factors such as available study hours, focus capability, learning speed, and preferred learning modes, including videos, quizzes, and articles. By processing this information, the system creates a unique learning profile for each student, which forms the basis for generating personalized recommendations. At the core of the system is an AI-driven analysis engine that evaluates student performance and learning behavior. It identifies strengths and weaknesses, predicts learning needs, and suggests suitable study strategies. The system continuously updates its recommendations based on the student's progress, ensuring adaptability and effectiveness. Based on this analysis, the system recommends appropriate learning resources aligned with the student's preferences. For example, visual learners may receive video content, while others may benefit from quizzes or reading materials. This improves understanding and retention of concepts. In addition to resource recommendations, the system generates personalized study plans according to the student's available time and learning capacity. These plans are flexible and adapt as the student progresses, helping maintain consistency and organization. The system also assigns targeted learning tasks to improve weak areas and reinforce key concepts. Regular feedback and performance tracking enable students to monitor their progress and stay motivated. Furthermore, the system ensures efficient use of study time by focusing more on difficult topics and less on already mastered content. This leads to improved academic performance and better time management. In conclusion, the AI-based Personalized Learning Recommendation System provides a smart and effective solution for modern education. By leveraging artificial intelligence, it delivers personalized content, adaptive study plans, and targeted tasks that improve learning efficiency and outcomes

Keywords: Artificial Intelligence, Personalized Learning, Recommendation System, Adaptive Learning, E-Learning

I. INTRODUCTION

Education plays a vital role in shaping an individual's knowledge, skills, and overall development. In recent years, the integration of technology into education has significantly transformed traditional teaching and learning methods. Digital learning platforms, online courses, and smart educational tools have made learning more accessible and flexible. However, most existing systems still follow a generalized approach,

delivering the same content to all students regardless of their individual differences. This often results in reduced effectiveness, as each student has unique learning abilities, preferences, and pace. Personalized learning has emerged as a powerful solution to overcome these limitations. It focuses on adapting educational content and teaching strategies according to the needs of each learner. By considering factors such as learning speed, interest, understanding level, and preferred learning style, personalized learning aims to provide a more effective and engaging educational experience. With the advancement of Artificial Intelligence (AI), it has become possible to design intelligent systems that can analyze student data and deliver customized learning solutions. This project introduces an AI-based Personalized Learning Recommendation System that aims to enhance the learning experience by providing tailored study resources, learning plans, and tasks. The system collects and analyzes data related to students, such as available study time, focus capability, and preferred modes of learning like videos, quizzes, and articles. Based on this data, it creates a unique learning profile for each student. The core component of the system is an AI-driven analysis engine that evaluates student performance and identifies strengths and weaknesses. Using this information, the system recommends suitable learning materials and generates personalized study plans that match the student's needs. It also assigns targeted tasks to improve weak areas and tracks progress over time. The main goal of this system is to improve learning efficiency, increase student



engagement, and support better academic outcomes. By delivering the right content at the right time in the right format, the system ensures effective utilization of study time. It also helps students stay motivated and consistent in their learning journey. In addition, the proposed system is designed to be scalable and can be integrated into existing e learning platforms and mobile applications. It can be used by school students, college students, and competitive exam aspirants, making it a versatile solution for modern education. In conclusion, this project focuses on developing an intelligent and adaptive learning system that addresses the limitations of traditional education methods. By leveraging AI technology, it aims to create a student-centric learning environment that enhances understanding, performance, and overall educational experience.

II. LITERATURE SURVEY

1. *Personalized Learning in Smart Education*

Wu et al. proposed a smart education framework that focuses on personalized learning using Artificial Intelligence techniques. The system analyzes student learning behavior and adapts educational content according to individual needs and performance. The study highlights how AI improves student engagement, learning flexibility, and academic performance. However, the system mainly concentrates on theoretical implementation and lacks a practical recommendation model for real-time adaptive learning.

2. *AI-Based Recommendation Systems in Education*

Xiong et al. developed an AI-based recommendation system that provides learning materials according to student interests and performance levels. The system uses data mining and machine learning approaches to analyze learner data and generate suitable educational resources. The proposed model improves learning efficiency and content accessibility. Although the system achieves better personalization, it does not include dynamic study plan generation or task management features.

3. *Adaptive Learning Management Systems*

Kucharski et al. presented an adaptive learning management system that customizes learning paths for students based on their progress and feedback. The system supports self-paced learning and helps students improve knowledge retention. The research demonstrates that adaptive learning systems can enhance user satisfaction and educational outcomes. However, the implementation complexity and lack of real-time recommendation updates remain significant challenges.

4. *Artificial Intelligence in Modern Education*

Russell and Norvig discussed the application of Artificial Intelligence in modern educational systems. Their work explains how intelligent systems can automate decision-making, analyze user behavior, and provide smart recommendations. AI techniques such as machine learning and predictive analysis are widely used in educational technology to support personalized learning. The study establishes a strong theoretical foundation for developing intelligent learning platforms.

5. *Software Engineering Approaches for Educational Applications*

Pressman explained software engineering methodologies used in developing reliable and scalable applications. The study emphasizes system planning, modular design, implementation, testing, and maintenance processes. These principles are important in building efficient AI-based educational systems that provide accurate recommendations and improved user experience.

III. SYSTEM ANALYSIS

A. *Problem Statement*

Most existing learning platforms follow a standardized teaching approach where the same content is provided to all students without considering their individual learning abilities, interests, and learning styles. This lack of personalization reduces student engagement, learning efficiency, and effective time management.



Students often struggle to find suitable learning resources and create proper study plans on their own. Current e-learning systems also provide limited adaptability and fail to adjust content based on student performance and progress.

Therefore, there is a need for an AI-based Personalized Learning Recommendation System that can analyze student data, recommend suitable resources, generate adaptive study plans, and improve learning outcomes through a personalized approach.

B. Limitations of the Current Solution

The currently available learning systems suffer from several limitations. Firstly, most platforms provide the same educational content to all students without considering individual learning behavior and preferences. Secondly, these systems mainly focus on content delivery rather than personalized study planning and learner engagement. Thirdly, important learner attributes such as study hours, focus capability, and preferred learning mode are often ignored.

Another major limitation is the absence of structured task assignment and adaptive recommendation mechanisms. Students are expected to manage their own schedules without intelligent guidance. Existing systems also lack flexibility in recommending suitable educational resources such as videos, quizzes, or articles according to learner preferences. These drawbacks reduce learning efficiency and make digital learning less interactive and student-centered.

C. Proposed System Overview

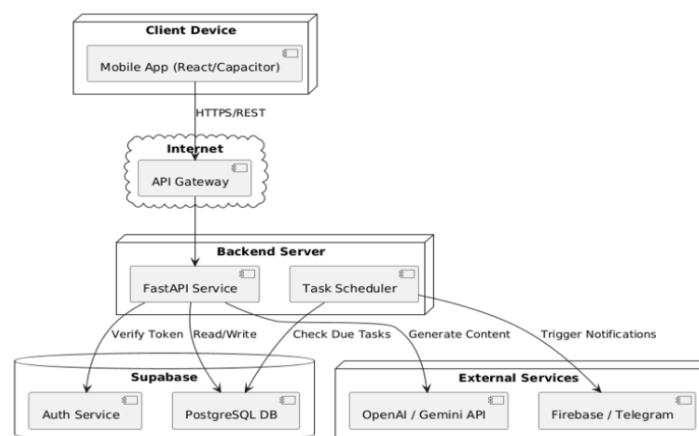
The proposed system, **AI-Smart Learn Personalized Learning**, is developed to provide a more adaptive, intelligent, and student-centric learning environment. Unlike traditional systems, the proposed platform focuses on understanding the learner's individual educational needs and delivering personalized support accordingly.

The system collects important student inputs such as available study hours, focus capability, and preferred learning mode to build a personalized learning profile. Based on this learner profile, the system generates customized study plans, targeted learning tasks, and suitable educational resource recommendations in the form of videos, quizzes, and articles.

The proposed system uses AI-driven recommendation logic to analyze learner behavior and provide adaptive learning support. It helps students manage their study routine in a more organized and efficient manner. The system aims to improve student engagement, learning efficiency, academic performance, and time utilization by making the learning process more personalized and effective. Overall, it provides a practical AI-based solution that can be integrated into modern digital learning platforms to support smarter and more flexible education.

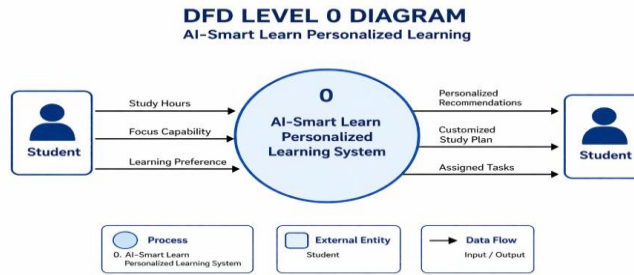
IV. SYSTEM DESIGN

A. Architectural Overview

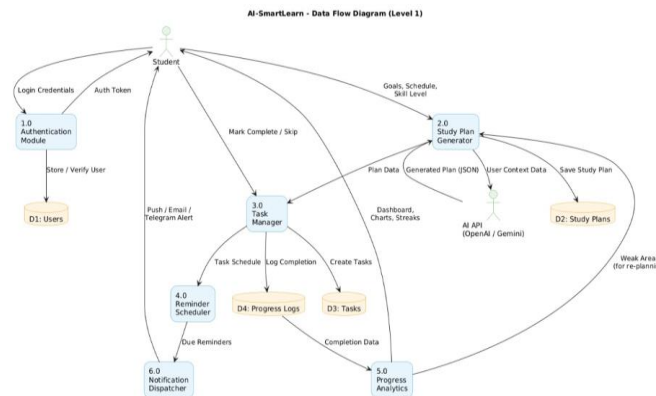


B. Data Flow Design

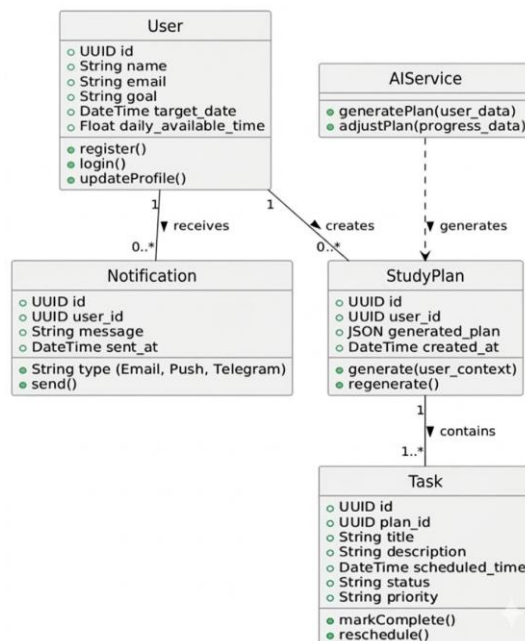
The Level 0 DFD gives a high-level overview of the system. It shows the interaction between the student and the AI-Smart Learn System



DFD Level-1



C. UML Class Design



D. Software Requirements Specification

The software requirements define the technologies and tools required for developing and implementing the AI-Smart Learn Personalized Learning System. The proposed system is developed using modern web technologies and programming frameworks to ensure efficient performance, scalability, and user-friendly interaction.

1. Operating System

- Windows 10 / Windows 11



2. Programming Language

- Python

3. Frontend Technologies

- HTML
- CSS
- JavaScript

4. Backend Framework

- Flask

5. Database

- MySQL / SQLite

6. Development Tools

- Visual Studio Code
- PyCharm

7. Browser Support

- Google Chrome
- Microsoft Edge

8. Additional Libraries

- Pandas
- NumPy
- Scikit-learn

V. IMPLEMENTATION

A. User Input Module

The User Input Module is responsible for collecting learner-specific information such as study hours, focus capability, and preferred learning mode. This module acts as the primary interface between the user and the system. The collected data is validated and forwarded to the processing module for further analysis.

B. Data Processing Module

The Data Processing Module preprocesses the user data and converts it into a structured format suitable for analysis. The module organizes learner information and prepares it for recommendation generation. This step helps improve the accuracy and efficiency of the system.

C. AI-Based Recommendation Module

The Recommendation Module is the core component of the system. It analyzes learner preferences and generates personalized recommendations using AI-based logic. Based on the student profile, the system suggests suitable learning



resources such as videos, quizzes, and articles. The module also identifies learning patterns and provides adaptive support according to student needs.

D. Study Plan Generation Module

The Study Plan Generation Module creates customized study schedules according to the learner's available study hours and focus capability. The system distributes learning activities efficiently to improve time management and learning productivity.

E. Task Assignment Module

This module assigns personalized tasks and activities to students based on their learning progress and weak areas. The tasks help students strengthen their understanding of concepts and improve overall performance.

F. User Interface Module

The User Interface Module provides an interactive and user-friendly environment for students to access recommendations, study plans, and assigned tasks. The frontend is developed using HTML, CSS, and JavaScript to ensure smooth navigation and better user experience.

G. Database Implementation

The database is implemented using MySQL/SQLite to store student profiles, preferences, recommended resources, and generated study plans. The database ensures efficient data management and quick retrieval of information whenever required.

H. System Integration

All modules are integrated using the Flask framework to ensure smooth communication between the frontend, backend, and database. The integrated system successfully generates personalized learning recommendations and adaptive study plans for users.

VI. TESTING AND PERFORMANCE EVALUATION

A. System Testing

System testing is conducted to verify the overall functionality of the integrated application. The system successfully processes user inputs, generates personalized study plans, recommends learning resources, and displays outputs correctly.

Test Case ID	Module Tested	Input	Expected Output	Result
TC-01	User Input Module	Student details	Accept valid input	Passed
TC-02	Recommendation Module	Learning preferences	Generate recommendations	Passed
TC-03	Study Plan Module	Study hours	Create study plan	Passed
TC-04	Database Module	User data	Store and retrieve data	Passed
TC-05	Output Module	Processed data	Display personalized output	Passed

B. Functional Testing

Functional testing ensures that each module performs according to the specified requirements

Functionality	Description	Status
---------------	-------------	--------



User Registration/Input	Accepts learner information	Successful
Data Processing	Processes user preferences	Successful
Resource Recommendation	Suggests suitable resources	Successful
Study Plan Generation	Generates personalized schedules	Successful
Task Assignment	Assigns learning activities	Successful

C. User Interface Testing

User Interface testing is performed to ensure smooth navigation, proper page responsiveness, and user-friendly interaction.

Parameter	Observation	Result
Navigation	Easy to access modules	Good
Page Responsiveness	Pages load properly	Good
User Interaction	Smooth interaction	Good
Interface Design	Simple and understandable	Good

D. Database Testing

Database testing verifies data storage, retrieval, and consistency.

Operation	Expected Result	Actual Result	Status
Store User Data	Save successfully	Saved correctly	Passed
Retrieve Data	Fetch records accurately	Retrieved correctly	Passed
Update Data	Modify existing data	Updated successfully	Passed

E. Performance Evaluation

The performance of the proposed system is evaluated using parameters such as recommendation accuracy, response time, and personalization efficiency.

Parameter	Existing System	Proposed System
Personalization	Low	High
Recommendation Accuracy	Moderate	High
Response Time	Moderate	Fast
User Engagement	Low	Improved
Learning Efficiency	Medium	High

F. Result Analysis

The system was tested using sample student inputs including study hours, focus capability, and learning preferences. The generated outputs included personalized study plans, recommended resources, and assigned tasks.



The results indicate that the proposed AI-Smart Learn system provides better personalization, improved learning efficiency, and enhanced student engagement compared to traditional learning systems.

VII. COMPARISON WITH EXISTING SYSTEMS

The proposed AI-Smart Learn Personalized Learning System is designed to overcome the limitations of traditional learning platforms by providing adaptive and personalized learning support. Unlike existing systems that provide the same content to all students, the proposed system analyzes learner-specific attributes and generates customized recommendations, study plans, and tasks.

Feature	Existing System	Proposed AI-Smart Learn System
Learning Approach	Generalized learning for all students	Personalized learning based on student preferences
Content Recommendation	Limited and static recommendations	AI-based adaptive recommendations
Study Plan Generation	Not available	Generates personalized study plans
Learning Resources	Same resources for all users	Customized resources based on learning mode
Task Assignment	Manual or unavailable	Intelligent task assignment
Adaptability	Limited adaptability	Dynamically adapts to learner behavior
Student Engagement	Moderate	Improved engagement and interaction
Time Management	No proper scheduling support	Efficient study time management
Performance Tracking	Basic tracking	Personalized analysis and recommendations
User Experience	Less interactive	User-friendly and interactive
Learning Efficiency	Moderate	High
Technology Used	Traditional e-learning methods	Artificial Intelligence and adaptive learning techniques

The comparison clearly shows that the proposed AI-Smart Learn system provides better personalization, adaptability, and learning support than existing educational systems.

VIII. LIMITATIONS AND FUTURE WORK

A. Limitations

Although the proposed AI-Smart Learn Personalized Learning System provides effective personalized learning support, certain limitations still exist in the current implementation. The system currently considers only limited learner attributes such as study hours, focus capability, and learning preferences while generating recommendations. More advanced learner behavior analysis techniques are not included in the present version.

The recommendation mechanism is based on basic AI-driven logic and does not fully utilize advanced Machine Learning or Deep Learning algorithms for prediction and personalization. The system also supports a limited collection of educational resources and lacks integration with large-scale online learning platforms.

In addition, the platform does not include features such as real-time emotion detection, voice-based interaction, multilingual support, and collaborative learning environments. The current system has been tested using a smaller dataset and may require further optimization for large-scale deployment and real-time educational environments.

B. Future Work

The future enhancement of the AI-Smart Learn system can focus on improving recommendation accuracy, scalability, and learner interaction. Advanced Artificial Intelligence techniques such as Machine Learning, Deep Learning, and



Predictive Analytics can be integrated to provide more intelligent and adaptive recommendations based on continuous learner behavior analysis.

The system can also be enhanced by integrating external learning platforms such as Google Classroom, Coursera, and YouTube educational APIs to provide a wider variety of learning resources. Real-time performance monitoring, emotion recognition, and feedback-based adaptive learning can further improve student engagement and learning efficiency.

Additional features such as multilingual support, voice assistants, gamification techniques, and collaborative learning modules can make the system more interactive and accessible to diverse learners. Future versions of the platform can also support large-scale deployment in schools, colleges, and online education systems to provide a fully intelligent and student-centric learning environment.

IX. CONCLUSION

The AI-Smart Learn Personalized Learning System successfully demonstrates the application of Artificial Intelligence in modern education by providing adaptive and personalized learning support. The system analyzes learner-specific inputs such as study hours, focus capability, and preferred learning mode to generate customized study plans, resource recommendations, and learning tasks.

Unlike traditional e-learning systems that provide generalized content, the proposed system focuses on learner-centered education and improves learning efficiency through intelligent recommendation techniques. The developed platform enhances student engagement, supports effective time management, and provides a more flexible learning experience.

The implementation and testing results indicate that the system performs efficiently in generating personalized outputs and improving user interaction. Therefore, the proposed AI-Smart Learn system serves as an effective solution for modern digital learning environments and highlights the importance of AI-driven adaptive education systems.

ACKNOWLEDGMENT

The authors acknowledge the valuable contributions of Dr. K. Prem Kumar, Professor and HOD, Department of AI & ML, ACE Engineering College, for his esteemed guidance and continuous support. The authors also thank the faculty, staff, and management of ACE Engineering College for providing the resources and environment that made this research possible.

REFERENCES

- [1] Wu, S., et al., "Personalized Learning in Smart Education," International Journal of Smart Education, 2024.
- [2] Xiong, Z., et al., "AI-Based Recommendation Systems in Education," Journal of Educational Data Mining, 2024.
- [3] Kucharski, S., et al., "Adaptive Learning Management Systems," International Conference on Educational Technology, 2025.
- [4] Russell, S., and Norvig, P., *Artificial Intelligence: A Modern Approach*, 4th Edition, Pearson Publications, 2021.
- [5] Pressman, R., *Software Engineering: A Practitioner's Approach*, McGraw-Hill Education, 2019.
- [6] Python Software Foundation, "Python Documentation," Available: <https://www.python.org/>
- [7] Flask Framework Documentation, "Flask Web Development Framework," Available: <https://flask.palletsprojects.com/>
- [8] MySQL Documentation, "MySQL Database Management System," Available: <https://www.mysql.com/>