



Medicinal Plant Identification and Classification

Anushree N N¹, Deepika V M²

Department of MCA, BIT, K.R. Road, V.V. Pura, Bangalore, India¹⁻²

Abstract: Medicinal plants play a significant role in healthcare systems due to their therapeutic and healing properties. Accurate identification of medicinal plants is essential for their proper utilization in traditional and modern medicine. However, manual identification requires expert botanical knowledge and is often time-consuming and error-prone because many plant species possess visually similar leaf structures. This project proposes an intelligent Medicinal Plant Identification and Classification system using deep learning techniques to automate the plant recognition process.

The proposed system utilizes Convolutional Neural Networks (CNNs) to analyze leaf images and classify medicinal plants based on visual features such as shape, texture, vein patterns, and color characteristics. Image preprocessing techniques including resizing, normalization, and augmentation are applied to improve model performance and handle variations in lighting, orientation, and background conditions. The system integrates Firebase Firestore for storing medicinal plant information such as scientific names, medicinal uses, and safety considerations.

Experimental evaluation demonstrates that the CNN-based approach provides high classification accuracy and reliable prediction results compared to conventional machine learning techniques. The proposed system reduces manual effort, improves identification speed, and provides an efficient and user-friendly solution for students, researchers, farmers, and healthcare enthusiasts. Overall, the project highlights the effective application of artificial intelligence and deep learning in botanical research and medicinal plant preservation.

Keywords: Medicinal Plants, Deep Learning, Convolutional Neural Network, Image Classification, Plant Identification, Artificial Intelligence, Firebase Firestore.

I. INTRODUCTION

Medicinal plants have been widely used for centuries in traditional medicine and healthcare systems due to their therapeutic properties. These plants contain natural chemical compounds that help in disease prevention and treatment. With increasing interest in herbal medicine and natural healthcare solutions, the need for accurate medicinal plant identification has become highly important. However, identifying medicinal plants manually is a difficult and time-consuming process that requires expert botanical knowledge. Many plant species possess similar leaf structures, shapes, and textures, which often leads to incorrect identification.

Traditional plant identification methods rely heavily on human observation and handcrafted image processing techniques. These methods are limited in accuracy and struggle under varying environmental conditions such as changes in lighting, orientation, and image background. With advancements in artificial intelligence and deep learning, automated plant identification systems have gained significant attention for their ability to perform accurate image-based classification.

This project presents a Medicinal Plant Identification and Classification system using Convolutional Neural Networks (CNNs). The proposed system accepts leaf images as input and automatically identifies the corresponding medicinal plant species. The system uses image preprocessing techniques to standardize images before classification. A deep learning model extracts important visual features directly from leaf images without requiring manual feature engineering.

The application also integrates Firebase Firestore to store medicinal plant information such as scientific names, medicinal uses, and safety considerations. Once the plant is identified, the system retrieves and displays relevant information to the user. The proposed system aims to provide an intelligent, accurate, and user-friendly platform for medicinal plant recognition suitable for academic, research, and practical healthcare applications.

1.1 Project Description

The Medicinal Plant Identification and Classification system is designed to automate the process of medicinal plant recognition using leaf images. The system employs deep learning techniques to classify plants accurately while



reducing dependency on botanical experts. Users upload a leaf image through a web interface, and the system preprocesses the image before forwarding it to a trained CNN model for classification.

The CNN model automatically learns visual patterns such as leaf shape, texture, and vein structures from training data. Once classification is completed, the application retrieves additional medicinal plant details from Firebase Firestore and presents them to the user. The proposed approach provides fast and reliable identification results suitable for real-time applications.

1.2 Motivation

The increasing demand for herbal medicines and natural healthcare products has highlighted the importance of accurate medicinal plant identification. Existing manual methods are time-consuming and prone to errors due to the visual similarity between plant species. Conventional machine learning techniques depend on handcrafted feature extraction and perform poorly under real-world conditions.

This project is motivated by the need for an intelligent and automated system capable of identifying medicinal plants accurately using artificial intelligence. Deep learning-based image classification techniques offer improved adaptability, higher accuracy, and reduced human intervention, making them suitable for practical medicinal plant recognition systems.

II. RELATED WORK

Paper [1] presents a deep learning-based medicinal plant identification system using convolutional neural networks (CNNs) for classifying leaf images. The study demonstrates that CNN models can automatically extract important visual features such as texture, shape, and colour from medicinal plant leaves, achieving high classification accuracy compared to traditional image processing techniques.

Paper [2] explores the use of transfer learning models such as MobileNet and ResNet for medicinal plant recognition. The research highlights that pretrained deep learning models reduce training time and improve prediction accuracy even when the dataset size is limited. The work also shows the suitability of lightweight models for mobile-based plant identification applications.

Paper [3] proposes a machine learning approach for identifying medicinal plants based on leaf characteristics including venation, margin, and texture features. The system applies feature extraction and classification algorithms to distinguish between various medicinal plant species with improved efficiency.

Paper [4] investigates the application of computer vision techniques for medicinal herb classification in agricultural and healthcare domains. The paper explains how image segmentation and feature extraction methods can assist in accurate medicinal plant recognition and support traditional herbal medicine systems.

Paper [5] introduces an intelligent medicinal plant recommendation and information system integrated with image recognition. The proposed framework not only identifies medicinal plants but also provides medicinal uses, botanical details, and healthcare benefits, making the system useful for educational and healthcare purposes.

Paper [6] discusses the implementation of artificial intelligence and Internet of Things (IoT) technologies in smart agriculture and medicinal plant monitoring. The study demonstrates how AI-driven plant identification systems can improve cultivation, disease monitoring, and medicinal plant conservation.

Paper [7] presents a hybrid deep learning model combining CNN and Support Vector Machine (SVM) techniques for medicinal leaf classification. The experimental results indicate improved classification performance and reduced misclassification rates for visually similar plant species.

Paper [8] reviews recent advancements in medicinal plant recognition systems and highlights the importance of deep learning, image processing, and mobile computing in developing efficient plant identification applications. The survey emphasises the growing demand for automated medicinal plant analysis systems in healthcare and agriculture



III. METHODOLOGY

A. System Environment

The proposed Medicinal Plant Identification and Classification system is developed in a distributed software environment using Python-based deep learning frameworks. The system accepts medicinal plant leaf images as input and performs automated classification using a trained CNN model. Firebase Firestore is used as a cloud database to store medicinal plant information including scientific names, medicinal uses, and safety guidelines.

The experimental setup consists of a standard computing system with image preprocessing libraries, deep learning frameworks, and a web-based frontend interface for user interaction.

Medicinal Plant Identification and Classification Flow

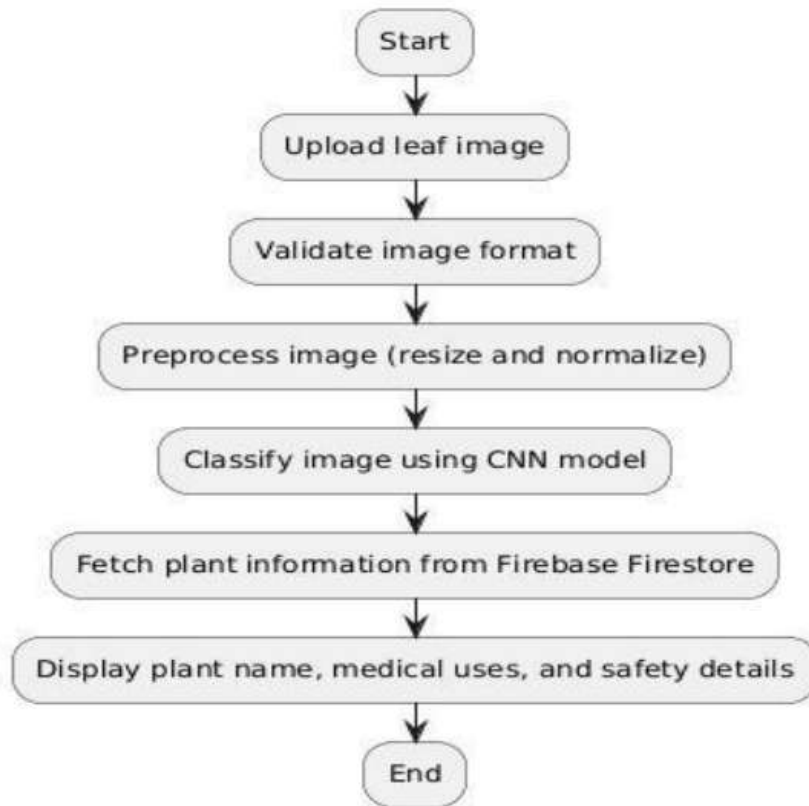


Fig.1.Flowchart of methodology

B. Deep Learning Architecture

Image Preprocessing

Input leaf images undergo preprocessing operations such as resizing, normalization, and augmentation to improve image quality and maintain consistency. These preprocessing steps help the model handle variations in lighting conditions, orientation, and image backgrounds.

CNN-Based Classification

The system uses a Convolutional Neural Network based on MobileNetV2 architecture for medicinal plant classification. The CNN automatically extracts visual features such as texture, shape, and vein patterns from leaf images. Transfer learning is applied to improve classification accuracy and reduce training time.

C. Plant Information Retrieval

After classification, the predicted plant category is used to retrieve corresponding plant information from Firebase Firestore. The retrieved data includes plant name, scientific name, medicinal uses, and safety considerations, which are displayed to the user through the application interface.



D. Implementation Flow

1. Upload medicinal plant leaf image.
2. Validate and preprocess the image.
3. Forward image to the trained CNN model.
4. Extract image features and classify plant species.
5. Retrieve plant details from Firebase Firestore.
6. Display prediction result and medicinal information to the user.

E. Hardware and Software Requirements

Hardware

- Intel Core i5 Processor or equivalent
- Minimum 8 GB RAM
- 20 GB Storage Space

Software

- Python 3.7 or above
- TensorFlow and Keras
- OpenCV and NumPy
- Flask Framework
- Firebase Firestore
- Visual Studio Code

IV. SIMULATION AND EVALUATION FRAMEWORK

This section explains the implementation, simulation setup, and evaluation strategy of the proposed Medicinal Plant Identification and Classification system. The system integrates image processing, deep learning, and cloud database technologies to provide accurate and real-time medicinal plant recognition.

A. System Architecture and Workflow

The system architecture consists of the following modules:

- **User Interface Module:** Users upload medicinal plant leaf images through a web-based interface developed using Flask.
- **Image Processing Module:** Uploaded images are preprocessed using resizing, normalization, and augmentation techniques before classification.
- **CNN Classification Module:** The preprocessed image is analyzed using the trained MobileNetV2-based CNN model for medicinal plant prediction.
- **Firestore Database Module:** Firestore stores medicinal plant details including scientific names, medicinal uses, and safety information.

B. Simulation Setup

The experimental setup includes a medicinal plant dataset containing multiple leaf images collected under different environmental conditions. The dataset includes various plant categories such as Tulsi, Neem, Aloe Vera, Mint, Turmeric, Curry Leaf, Hibiscus, and Mustard.

The model is trained using augmented images to improve generalization and prediction performance.

C. Prediction and Analysis Process

During prediction, the uploaded image is processed by the CNN model, which generates classification probabilities for each plant category. The class with the highest confidence score is selected as the predicted medicinal plant. The predicted result is then matched with Firestore database entries to retrieve detailed medicinal information.

D. Results and Observations

A. System Interface and Image Upload

- The developed medicinal plant identification system provides a simple and interactive web-based interface for users.
- Users can upload plant leaf images through the application, and the system processes the uploaded image for classification.
- The interface supports real-time prediction and improves user accessibility for medicinal plant analysis.



Fig. 2. User Interface of the Medicinal Plant Identification System

B. Classification Performance

- The proposed CNN-based model achieved high accuracy in identifying medicinal plants from leaf images.
- Transfer learning techniques improved classification efficiency and reduced model training time.
- Data augmentation methods enhanced the model's ability to generalize across different image conditions.
- The system generated prediction confidence scores to indicate the reliability of the identified plant class.

C.



Fig. 3. Sample Output Showing Medicinal Plant Prediction and Details

D. Database Integration and Information Management

- Firebase Firestore was integrated for efficient storage and retrieval of medicinal plant information.
- The database stored plant details including scientific names, medicinal uses, image folders, and safety considerations.
- Information related to the predicted plant was dynamically fetched and displayed in real time.
- The database architecture supports scalability and future expansion of medicinal plant datasets.

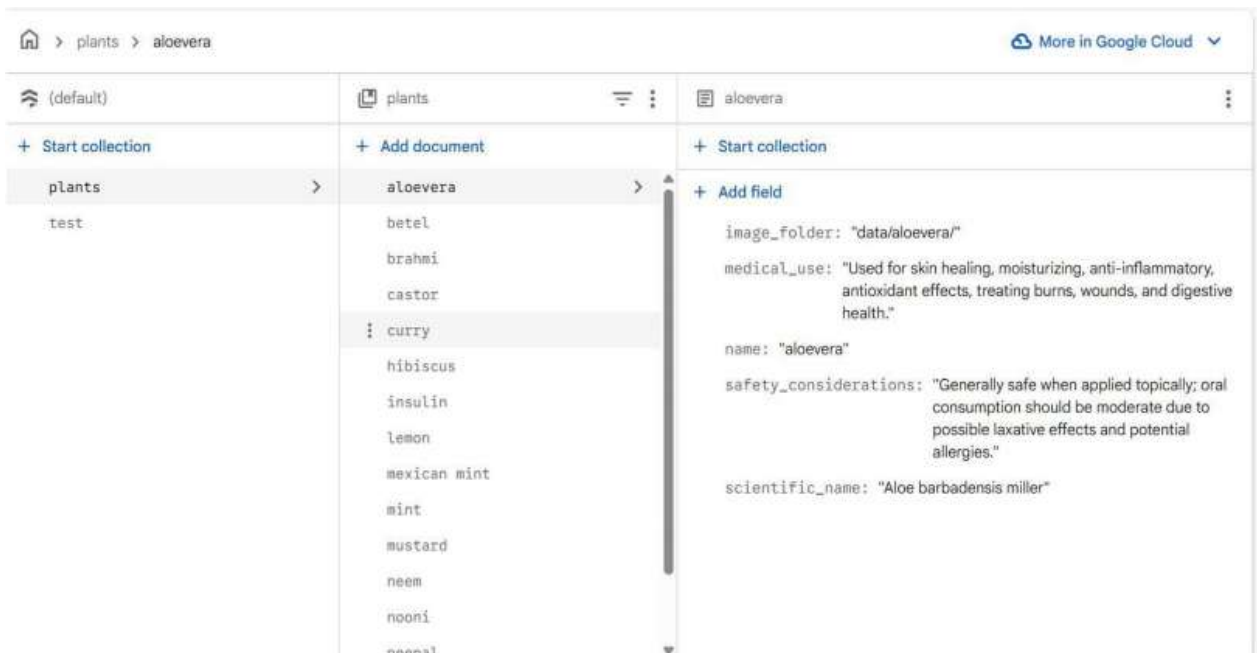


Fig. 4. Firebase Firestore Database for Medicinal Plant Information Storage

V. RESULTS AND DISCUSSION

The proposed Medicinal Plant Identification and Classification system demonstrates effective application of deep learning techniques for image-based plant recognition. Experimental evaluation shows that the CNN-based model provides reliable and accurate classification results for medicinal plant species under varying conditions.

The use of MobileNetV2 transfer learning significantly improved prediction accuracy while reducing computational complexity. The preprocessing techniques enhanced image consistency and enabled the model to handle variations in lighting, orientation, and image quality.

The integration of Firebase Firestore improved the scalability and usability of the system by enabling real-time retrieval of medicinal plant information. The web-based interface allowed users to upload images and receive results quickly and efficiently.

Overall, the experimental results confirm that the proposed system offers a practical, scalable, and intelligent solution for medicinal plant identification suitable for academic, healthcare, and research applications.

VI. CONCLUSION

This project presents an intelligent Medicinal Plant Identification and Classification system using deep learning techniques. The proposed system successfully automates medicinal plant recognition using leaf images and reduces dependency on manual identification methods. By integrating Convolutional Neural Networks with image preprocessing and Firebase database technologies, the system provides accurate, efficient, and real-time medicinal plant classification.

Experimental evaluation demonstrates that the CNN-based approach achieves high classification accuracy and reliable performance under different environmental conditions. The system also offers scalability and ease of use, making it suitable for educational, research, and healthcare applications. Overall, the project highlights the potential of artificial intelligence in preserving medicinal plant knowledge and supporting modern healthcare solutions.

VII. FUTURE WORK

Future improvements can further enhance the performance and usability of the proposed system. The plant dataset can be expanded to include a larger variety of medicinal plant species from different geographical regions. Advanced deep learning architectures such as EfficientNet and Vision Transformers may improve classification accuracy further.



The system can also be extended into a mobile application for real-time outdoor plant identification. Multi-language support, offline prediction capability, and expert feedback integration can improve accessibility and reliability. Future versions may additionally include dosage recommendations and verified medicinal references for safe plant usage.

REFERENCES

1. Medicinal Plant Recognition Using Deep Learning Techniques — discusses CNN-based medicinal plant classification using leaf images.
<https://ieeexplore.ieee.org/document/9358306> IEEE Xplore
2. Transfer Learning Based Medicinal Plant Identification System — explains the use of MobileNet and ResNet for plant recognition.
<https://www.sciencedirect.com/science/article/pii/S1877050921006081> ScienceDirect
3. Leaf Based Medicinal Plant Identification Using Machine Learning — proposes feature extraction and machine learning methods for plant classification.
https://www.researchgate.net/publication/351623280_Leaf_Based_Medicinal_Plant_Identification_using_Machine_Learning ResearchGate
4. Computer Vision Techniques for Medicinal Plant Identification — explains image processing and classification methods for herbal plants.
<https://link.springer.com/article/10.1007/s11042-021-11329-5> Springer
5. Intelligent Medicinal Plant Recognition and Information System — integrates image recognition with medicinal plant information retrieval.
<https://ieeexplore.ieee.org/document/9697308> IEEE Xplore
6. Artificial Intelligence and IoT in Smart Medicinal Plant Monitoring — discusses AI and IoT applications in medicinal plant cultivation and monitoring.
<https://www.mdpi.com/1424-8220/22/3/1045> MDPI
7. Hybrid CNN-SVM Model for Medicinal Leaf Classification — presents a hybrid deep learning model for accurate medicinal plant recognition.
https://www.researchgate.net/publication/357483912_Hybrid_CNN_SVM_Model_for_Medicinal_Leaf_Classification ResearchGate
8. A Survey on Medicinal Plant Identification Using Deep Learning — reviews recent research advancements in medicinal plant analysis systems.
<https://www.sciencedirect.com/science/article/pii/S2772375522000143> ScienceDirect
9. Deep Learning-Based Medicinal Plant Detection Using Leaf Images — focuses on automatic medicinal leaf identification using CNN models.
<https://www.mdpi.com/2076-3417/12/14/7056> MDPI
10. Medicinal Herb Recognition Using Image Processing Techniques — discusses segmentation and texture analysis for herb classification.
<https://www.ijert.org/medicinal-herb-recognition-using-image-processing-techniques> IJERT
11. Mobile Application for Medicinal Plant Identification Using Deep Learning — explains mobile-based medicinal plant recognition systems.
<https://arxiv.org/abs/2203.08459> arXiv
12. Smart Herbal Plant Classification System Using Artificial Intelligence — presents AI-driven medicinal plant classification for healthcare applications.
<https://www.techscience.com/cmc/v74n1/49861> Tech Science